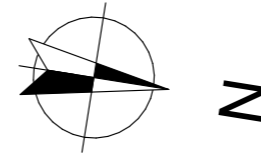


LES BORÉALES

DE SAINT-PRYVÉ

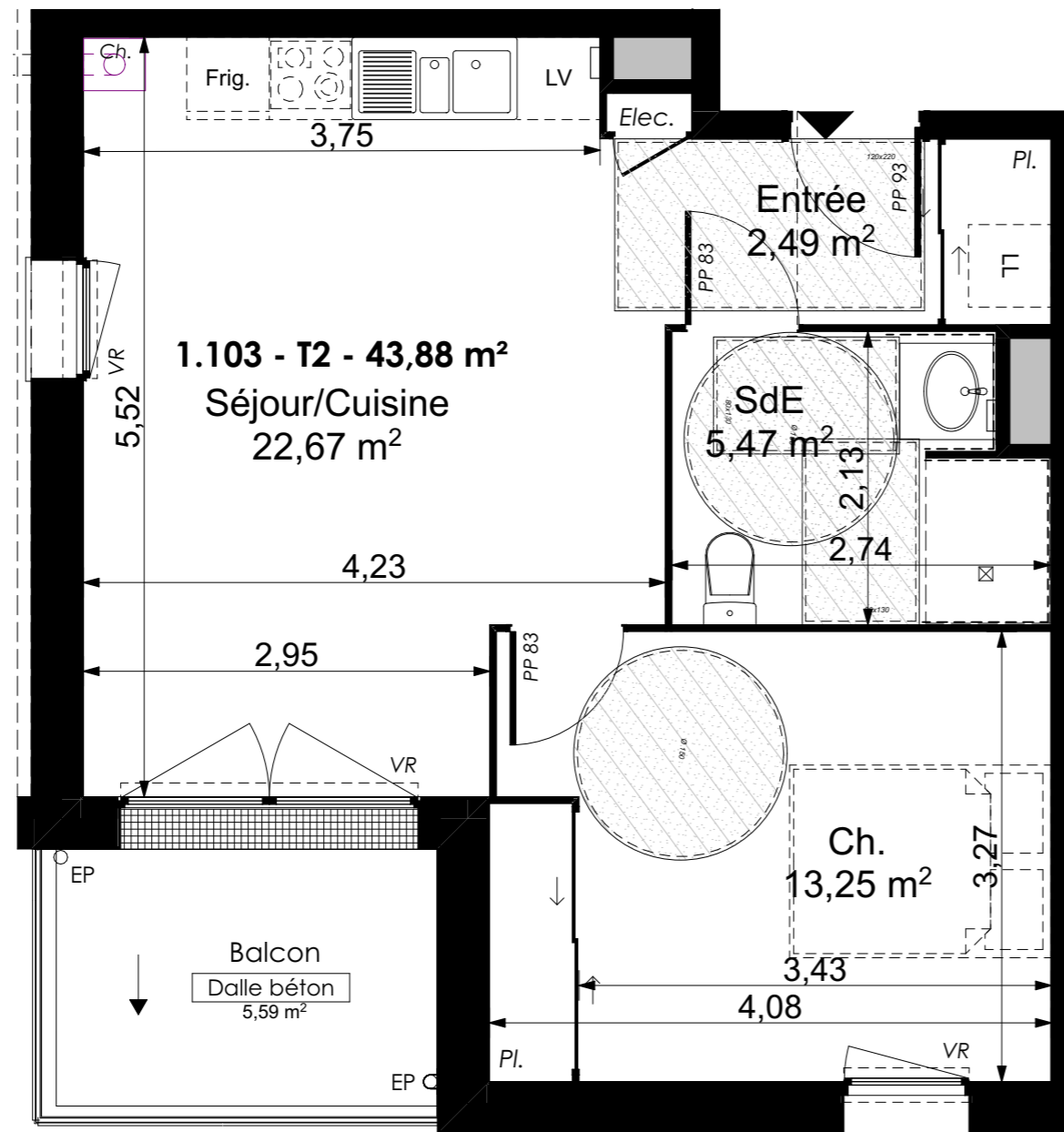


Valloire Habitat

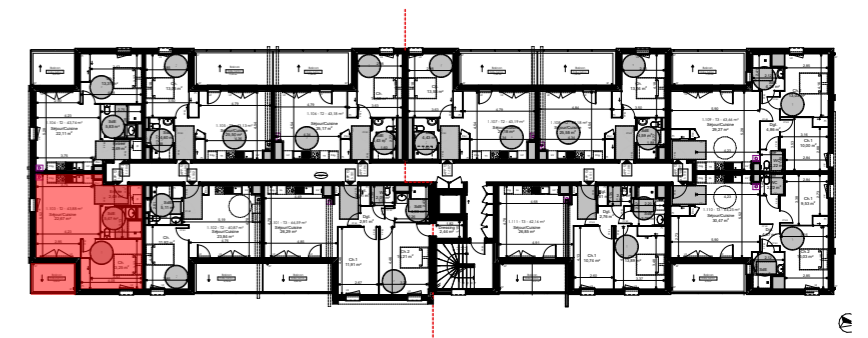
Groupe ActionLogement

28 bis rue du Gros Raisin
45750 SAINT-PRYVE-SAINT-MESMIN

Les BoRéales de Saint-Pryvé



TYPE T2 - LOGEMENT 1-103 R+1		
Séjour/Cuisine		22,67 m ²
Entrée		2,49 m ²
SdB		5,47 m ²
Ch. 1		13,25 m ²
Total surfaces habitables		43,88 m ²
Annexes		Surf. Utile
Balcon		5,59 m ²
Total surfaces Annexes		5,59 m ²
TOTAL SURFACES		49,47 m ²



15/11/2022 Indice C

Ech : 1:50

0.00 0.50 1.00 2.00 3.00